

# Automating Glycan Sample Prep

Automated streamlining process for glycan sample preparation and enrichment with high throughput and reproducibility can be obtained using S-BIO's SweetBlot® and BioFellow®

## SweetBlot®

SweetBlot® enables full automation of sample pretreatment (protein denature and glycan release), glycan purification and labeling. It is most suitable for high-throughput glycan sample prep for MALDI-TOF MS analysis.



## BIOFELLOW®

BIOFELLOW® can automate glycan purification and labeling processes using BlotGlyco® kit in 96-well format. This robot is compatible with 2-AB labeling for fluorescent HPLC or LC-MS glycan analysis.

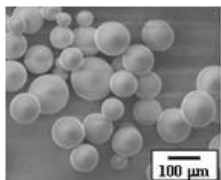


Both robots are manufactured by System Instruments Co., Ltd. (Tokyo, Japan)

### Features:

- Both robots are based on BlotGlyco® technology. It enables efficient purification and labeling of glycan from crude biological samples including peptide, surfactant and other impurities.
- Applicable to wide range of samples such as antibodies, complicated glycoproteins, cells, sera, etc.
- Applicable to any type of glycan: N-glycan, O-glycan, fucosylated, phosphorylated and sulfated glycan.
- Quantitative data are available from MALDI-TOF MS by a combination of the robots and our original protocols and bioinformatics. It brings great advantages to high-throughput glycan analysis: 96 assays in a day from sample prep to data.
- Application: Cell line screening, process development and quality control of biologics. Glycan biomarker discovery and validation.

### BlotGlyco® kit for automation robots (BS-45413Z)

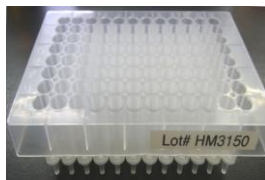


BlotGlyco® beads



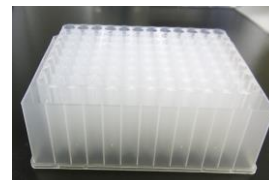
Filter plate

Reaction vessel for BlotGlyco® beads



Cleanup plate

SPE plate for removal of residual labeling reagent



Collection plate

Deep-well plate for sample collection

CONTACTS: [info.s-bio@s-bio.com](mailto:info.s-bio@s-bio.com) • [www.s-bio.com](http://www.s-bio.com) • +1 (603) 425-9697  
S-BIO, Vaupell Holdings Inc., Group company of Sumitomo Bakelite Co., Ltd.  
20 Executive Drive • Hudson • NH 03051