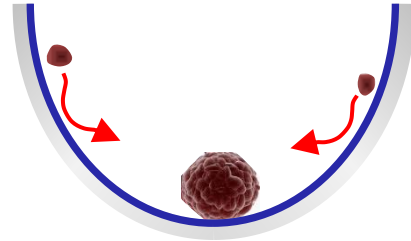


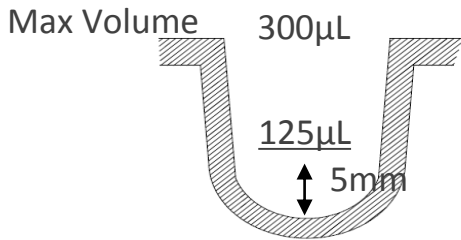
# PrimeSurface®

Bringing 3D Cells Culture for Reliable Anticancer Drug Screenings and Regenerative medicine

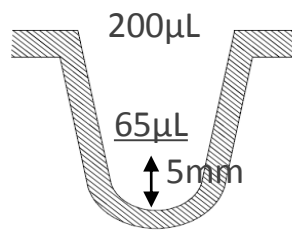


- Biocompatible hydrophilic polymer on the surface promotes cell aggregation
- Single uniform Embryoid Body forms in one well

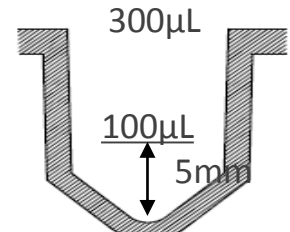
## ● Three well bottom shapes of 96 well microplate



MS-9096UZ (96-well, clear)  
MS-9096WZ (96-well, white)



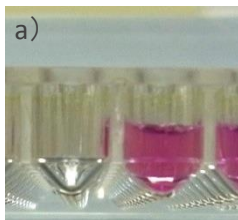
MS-9096MZ (96-well, clear)  
※Well Bottom Shape: Spindle



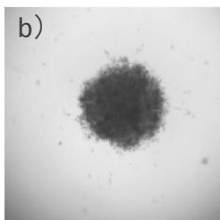
MS-9096VZ (96-well, clear)

## ● Application example : Utilizing V bottom plate (MS09096VZ)

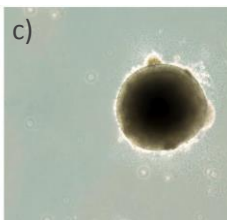
-Retinal tissue formation from Human ES Cells-



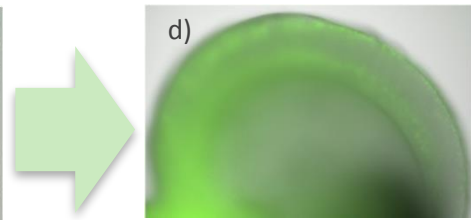
A) Plate cut section



b) After 18 Hrs culture



c) After 6 days culture



d) Self-formation of retinal tissue from the aggregate of hESCs

Data (b-d) were provided by Division of Human Stem Cell Technology, RIKEN Center for Developmental Biology



S-BIO, Vaupell Holdings Inc., A Group Company of Sumitomo Bakelite Co., Ltd.

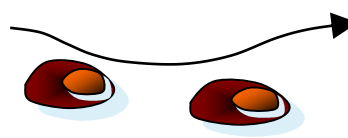
20 Executive Drive, Hudson, NH 03051 • (603) 425-9697

Contact: [info.s-bio@s-bio.com](mailto:info.s-bio@s-bio.com) • URL: [www.s-bio.com](http://www.s-bio.com)

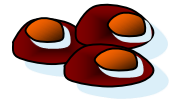
# PrimeSurface® cell culture plate & dish



No interaction with plate surface



Aggregate by cell-cell interaction



## Adhesive performance of cells

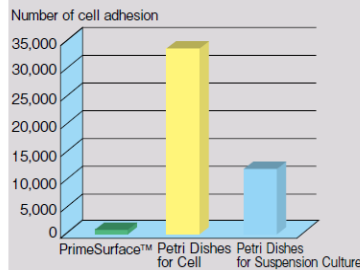
Culture condition:

Number of seeding cells:  $1 \times 10^4$  cells/mL,  
2mL/dish of 35 mm $\phi$

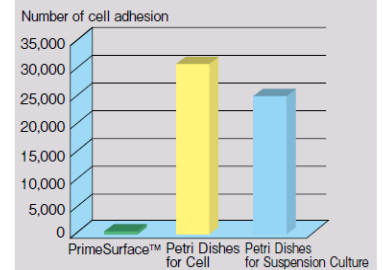
Medium: DMEM, FCS 10%

Cultured for 3 days with adherent cells were counted.

Human Hepatoma (HepG2) Cell culture



Mouse Macrophages(J774A.1) Cell Culture



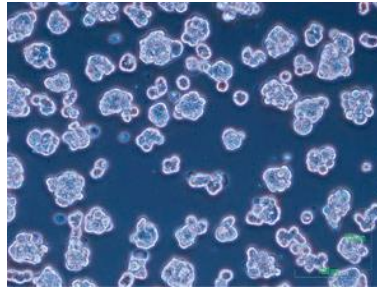
## Result of HepG2 cell culture

Culture condition:

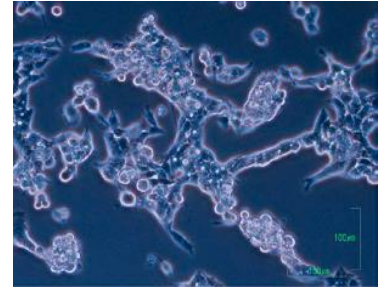
Seeding cell number:  $1 \times 10^4$  cells/ml  
2ml/35mm $\phi$ dish

Medium: DMEM, FBS10%

Cultured for 3 days



PrimeSurface®  
No cell adhesion was observed.  
The fully suspended cells formed natural cell aggregates by the interaction between cells.



Conventional polystyrene petri-dish  
Cells adhered on the plate and started the morphological changes.

	Cat. No.	Product Name	Well type	Color	Well bottom	Maximum well	Package
Microplate	MS-9024XZ	PrimeSurface 24 well	24	Clear	Flat (1.8cm <sup>2</sup> )	3.4 ml	Individual package 10 plates/case
	MS-9096UZ	PrimeSurface 96U	96	Clear	Round	300 $\mu$ L	Individual package 20 plates/case
	MS-9096WZ	PrimeSurface 96W	96	White	Round	300 $\mu$ L	Individual package 20 plates/case
	MS-9096MZ	PrimeSurface 96M	96	Clear	Spindle	200 $\mu$ L	Individual package 20 plates/case
	MS-9096VZ	PrimeSurface 96V	96	Clear	V	300 $\mu$ L	Individual package 20 plates/case
	MS-9384UZ	PrimeSurface 384U	384	Clear	Round	106 $\mu$ L	Individual package 20 plates/case
	MS-9384WZ	PrimeSurface 384W	384	White	Round	106 $\mu$ L	Individual package 20 plates/case
Dish	MS-9035XZ	PrimeSurface dish 35mm	—	Clear	Flat (9cm <sup>2</sup> )	—	5/package 50/case
	MS-9060XZ	PrimeSurface dish 60mm	—	Clear	Flat (21cm <sup>2</sup> )	—	10/package 100/case
	MS-9090XZ	PrimeSurface dish 90mm	—	Clear	Flat (57cm <sup>2</sup> )	—	10/package 50/case



S-BIO, Vaupell Holdings Inc., A Group Company of Sumitomo Bakelite Co., Ltd.

20 Executive Drive, Hudson, NH 03051 • (603) 425-9697

Contact: [info.s-bio@s-bio.com](mailto:info.s-bio@s-bio.com) • URL: [www.s-bio.com](http://www.s-bio.com)